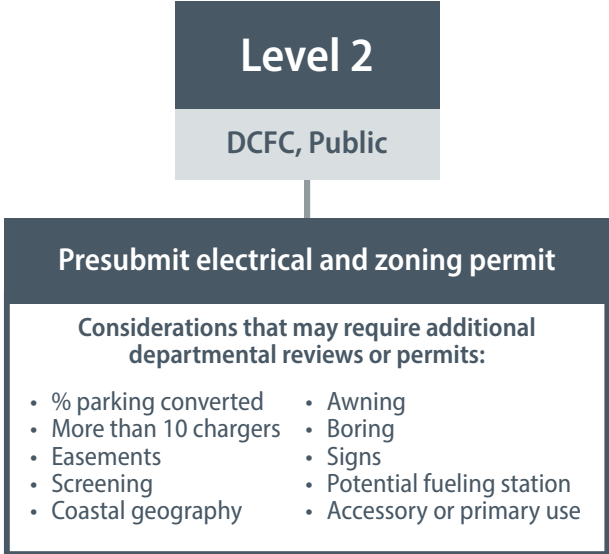


# EV Charging Permit Process Flowchart



**NO**

Accessory use projects

**B2**

Submit permit(s): building, electrical



Concurrent

**B3.2**

Building and electrical reviews completed by AHJ

Approved



**NO**

Make revisions and resubmit application

**YES**

**B4.2**

Permit approved administratively

Sequential



**B3.1**

Building permit review completed by AHJ

Approved

Make revisions and resubmit application

Not approved

**B4.1**

Electrical permit review completed by AHJ

Approved

Make revisions and resubmit application

Not approved



**NO**

Make revisions and resubmit application

**YES**

**B5.1**

Permit approved administratively

**YES**

Primary or accessory use projects

**A2**

Submit for approval plans made by planning staff



**NO**

Administrative approval

**YES**



**NO**

Make revisions and resubmit application

**YES**

**A3**

Submit permit(s): building, electrical



Concurrent

**A4.2**

Building and electrical reviews completed by AHJ

Approved



**NO**

Make revisions and resubmit application

**YES**

**A5.2**

Permit approved administratively

Sequential



**A4.1**

Building permit review completed by AHJ

Approved

Make revisions and resubmit application

Not approved

**A5.1**

Electrical permit review completed by AHJ

Approved

Make revisions and resubmit application

Not approved



**NO**

Make revisions and resubmit application

**YES**

**A6.1**

Permit approved administratively

## KEY

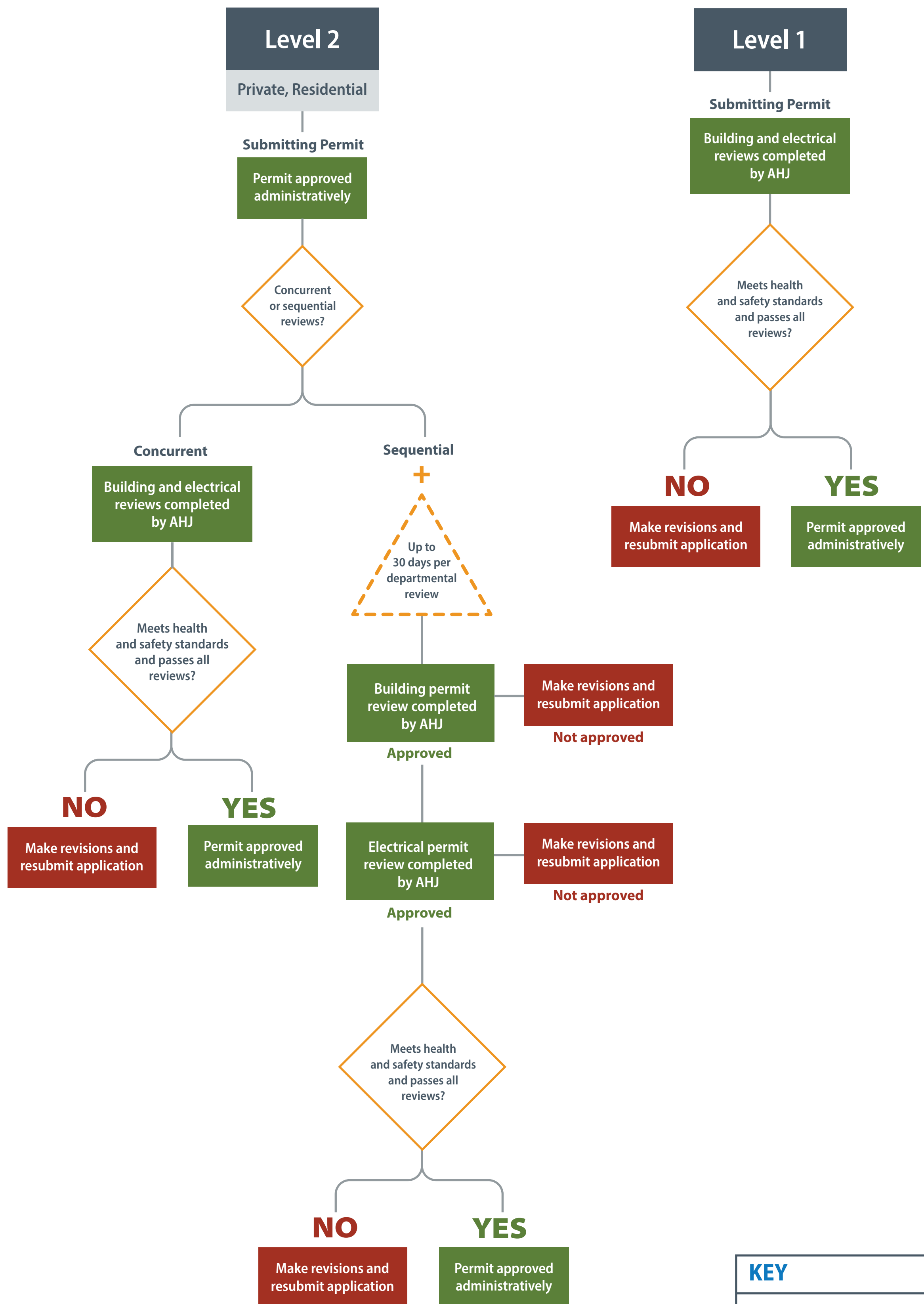
**AHJ:** Authorities Having Jurisdiction

**DCFC:** DC Fast Charging

 A step in the process

**A2 and B2:** Separate pathways with numbers marking a subcomponent

# EV Charging Permit Process Flowchart



## KEY

**AHJ:** Authorities Having Jurisdiction  
**DCFC:** DC Fast Charging